

# Washoe County Planning Commission

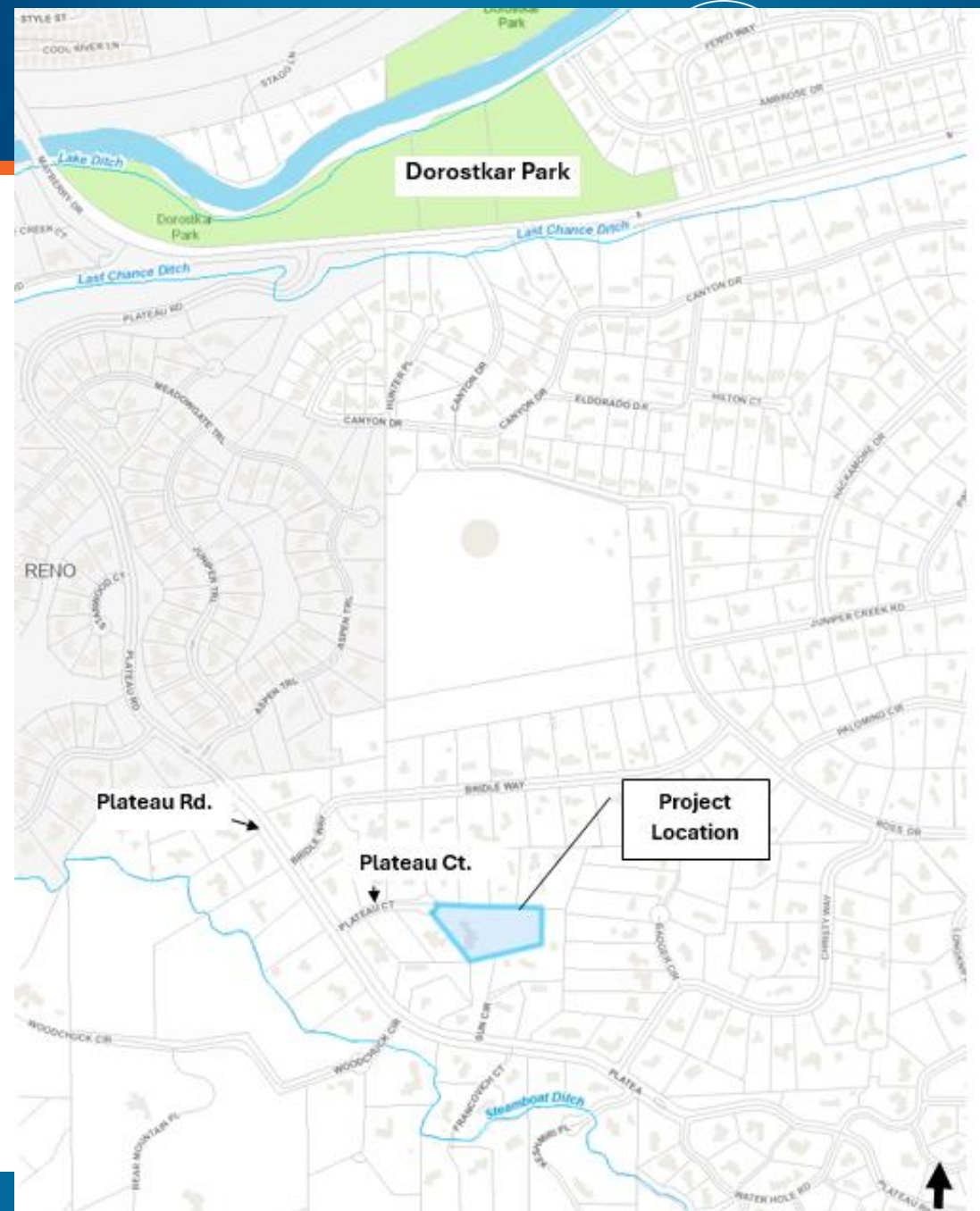


## **WAB24-0012 (Wyatt)**

February 4, 2025

# Vicinity Map

- Located at 4189 Plateau Ct.
- 2.55-Acres
- Regulatory zone of LDS
- Southwest Truckee Meadows

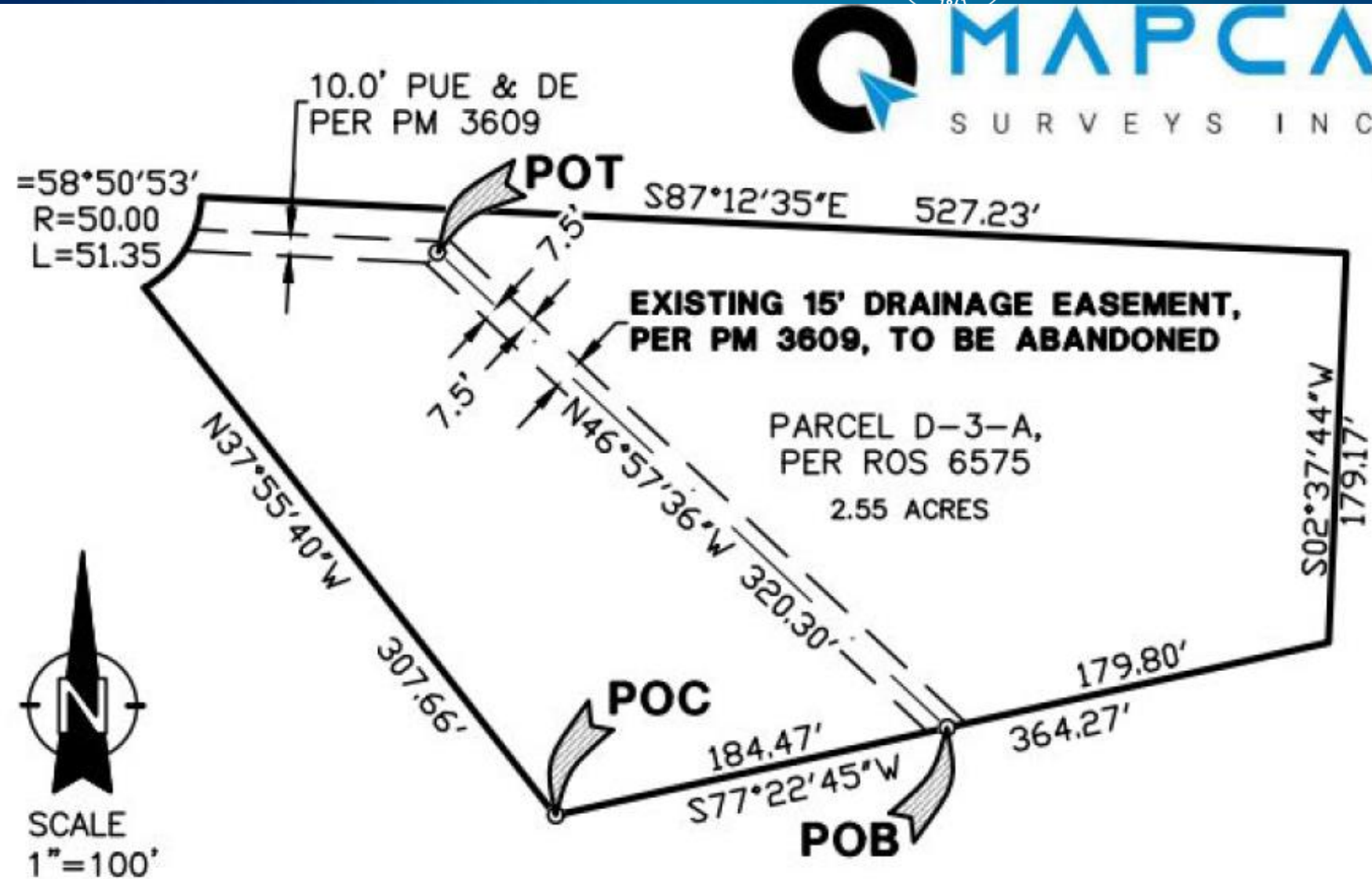


# Request



COMMUNITY  
SERVICES DEPARTMENT

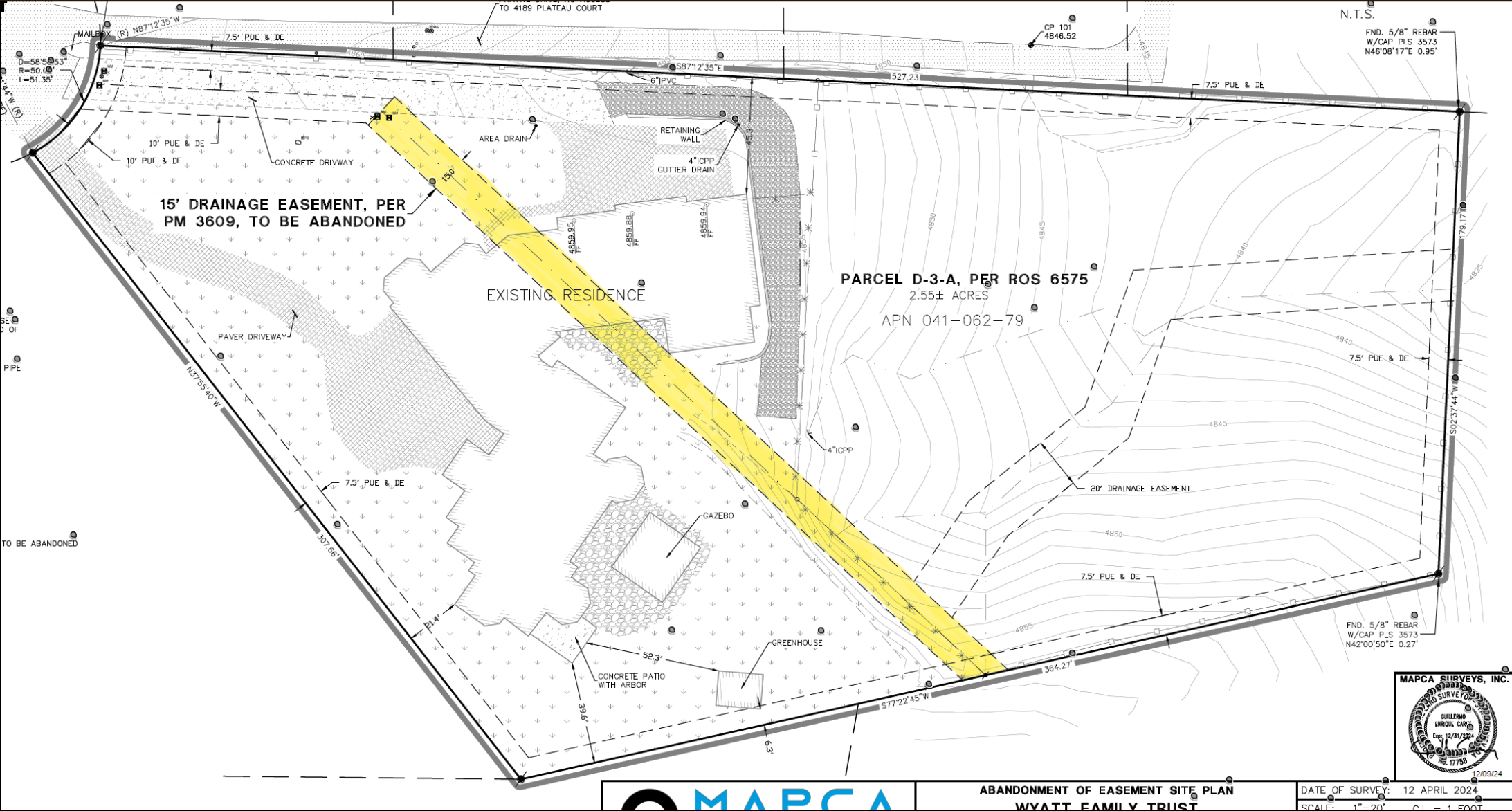
Abandon a 15-foot-wide drainage easement (approximately 320-feet in length) that bisects the subject parcel and an existing single-family dwelling



# Site Plan with Improvements



COMMUNITY  
SERVICES DEPARTMENT





# Noticing

- Abutting property owners were properly noticed.
- One email was received.
  - No opposition



# Reviewing Agencies & Findings



- Applicable agencies and County departments reviewed the application; their comments are included in the staff report.
- Agencies/depts. with conditions are included in the exhibit for Conditions of Approval.
- Staff can make all the findings as explained in more detail in the staff report.

# Possible Motion



I move that, after giving reasoned consideration to the information contained in the staff report and information received during the public hearing, the Washoe County Planning Commission approve Abandonment Case Number WAB24-0012 for Joseph and Fran Wyatt Family Trust, with the conditions included as Exhibit A to this matter, having made all three findings in accordance with Washoe County Code Section 110.806.20

# Thank you

Courtney Weiche, Senior Planner  
Washoe County CSD – Planning Division  
[cweiche@washoecounty.gov](mailto:cweiche@washoecounty.gov)  
775-328-3608

